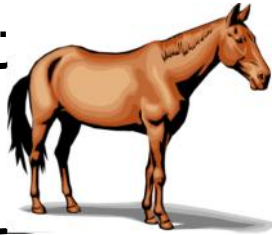


Notes from....



Serrano Creek Ranch Equestrian Center

JUNE 2016

25200 Trabuco Road, Lake Forest, CA 92630

Office Phone 949-768-5921

Email: <SerranoCreekRanch@msn.com>

As the stables' riding academy ramps up, we will be starting with a disproportional number of beginning riders. As we all know, putting the green riders in the "big arenas" can be frustrating for all the riders, not just the beginners. To create a safe riding environment for all, the academy will be building an additional "beginners" arena to minimize the impact of these students on the overall population. Of course, like all arenas, this one will be open to all boarders of Serrano.

After a careful and thorough review of the land usage at SCR, the arena will be built where back trailer parking now exists. Most, but not all trailers will be moved to the front between the bull pen and turnout. The benefits of locating the arena it here is that it will also serve as a small turnout for this portion of the stable. This will be a big step toward balancing the ratio of arena space to specific horse stabling locations. Now folks in the back will less likely need to go to the other end of the stable to turn out. Many horses don't like the loneliness of the front turn out, so this new space will provide a different turn out experience for all of the stable's horses.

This additional arena space (estimated at 45' x 90') represents a 10% square footage increase of the riding area at SCR. Work will begin in early June, and if all goes well will be completed by early August.

In order to make room for more trailers up front, the bull pen radius will be reduced by 6'. This will also allow us to discard the worst of the bull pen panels, so that the remaining

would constitute a semi remodel.

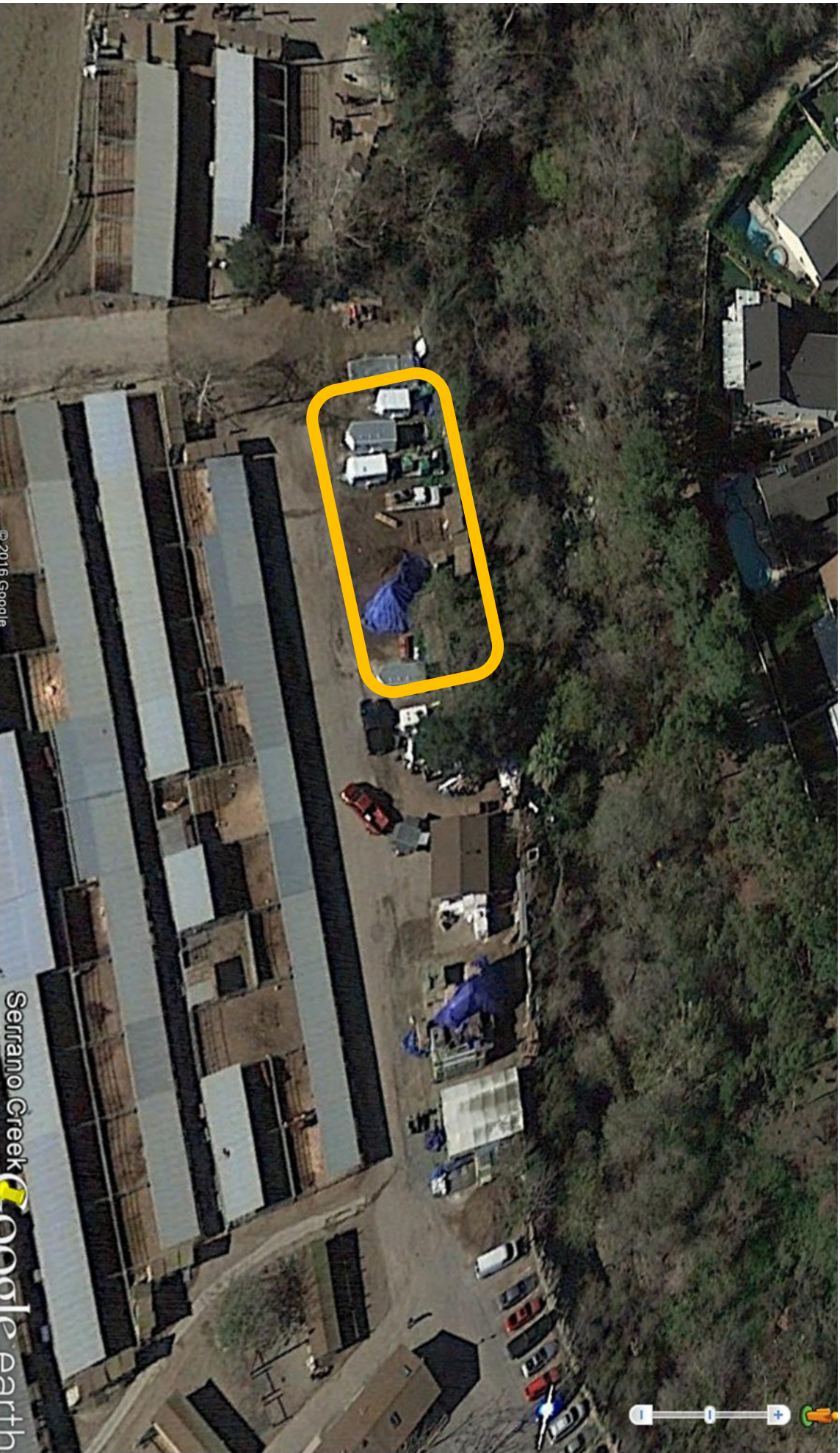
From Approximately May – November the newly moved trailers will be parked closer to the creek fencing. From December to April, these trailers would be pulled forward so that there is room to store compost for the upcoming spring purchasing season. This storage will allow the compost sales to continue to subsidize the stable operations to the extent they have done previously.

A few more items. . .

If you have changed any of your contact information, please remember to inform the office. We had a case recently with a colicky horse and were unable to reach the owner because their cell # had switched.

Also . . .

Awhile back the stable adopted a few neutered feral cats as an alternative to setting out poison to control our uninvited friends. Regrettably, using poison introduces toxics into the native food chain, which work its way up to the owls and hawks. Our plan is that the cat population would be a greener alternative. To make this work, the cats need to be hungry enough to do a little hunting. If we start feeding them, then they stop hunting. The inevitable result is the rat population will increase, forcing us to return to the poison bait program. Please resist feeding the cats. For in doing, you are actually forcing us to release poison into the environment.



The yellow rectangle shows the approximate location and size of the new Beginners' Arena